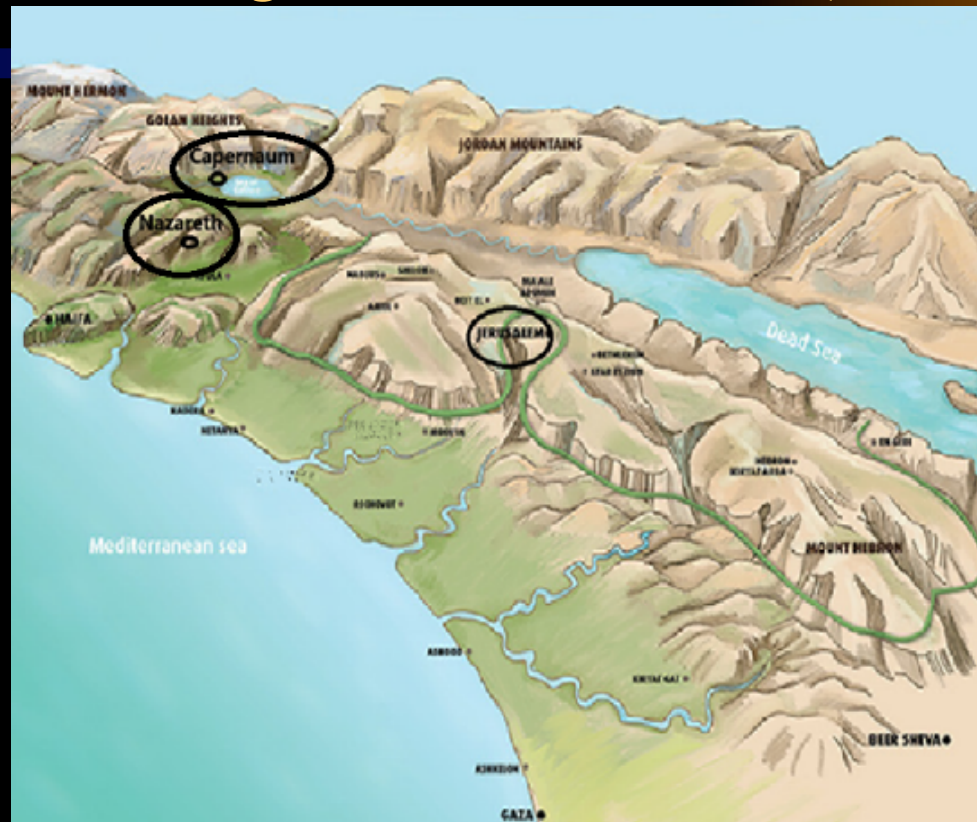


CHRIST'S PROPHETIC GALILEAN MENTORSHIP

by Mario Seigle, June 13, 2026 (PART 1)



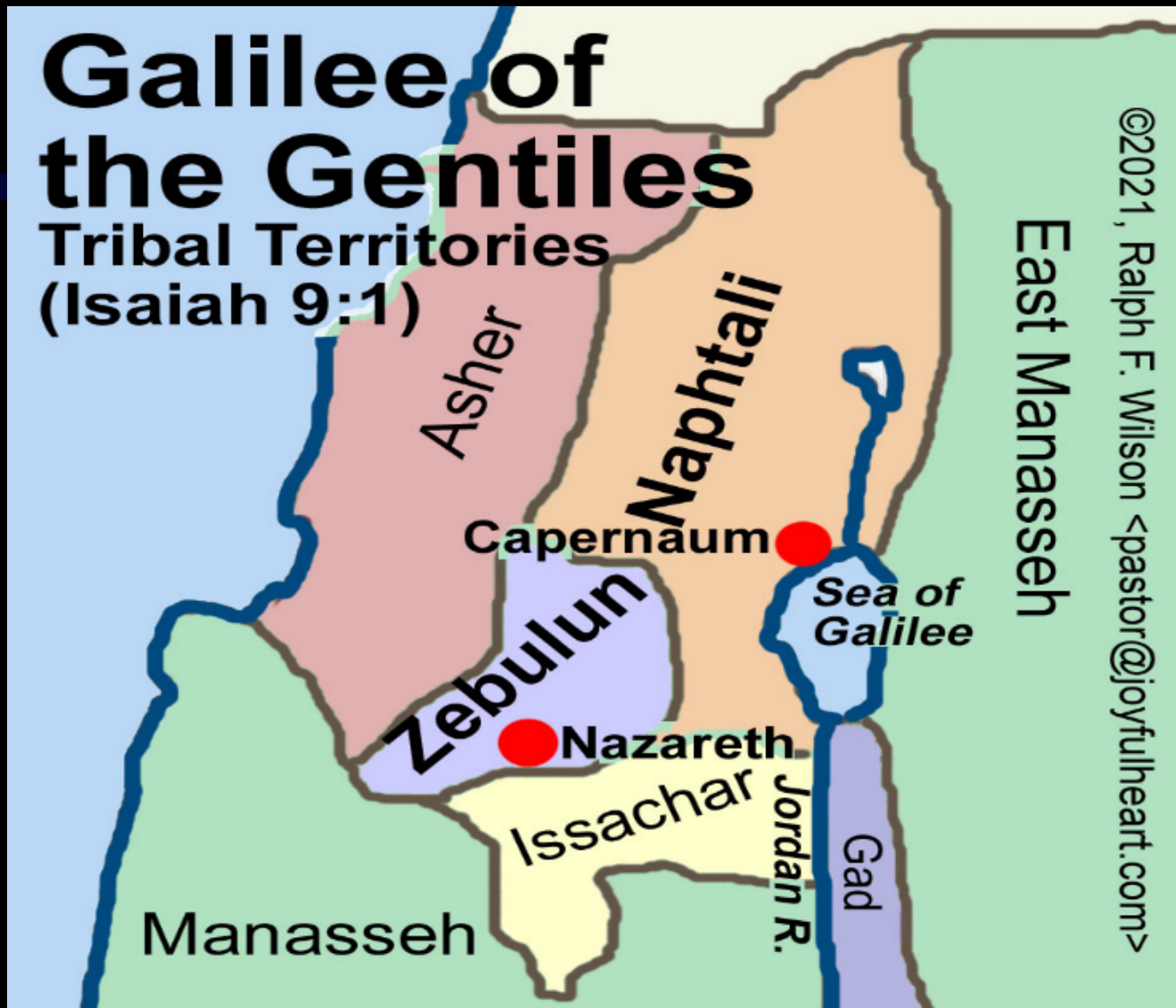
God the Father & the Word carefully prepared for the Messiah's 3 ½ ministry & His mentorship of the disciples, letting it be known ahead of time (Dan. 9:24-27). We will better understand the Bible knowing its precise geography.



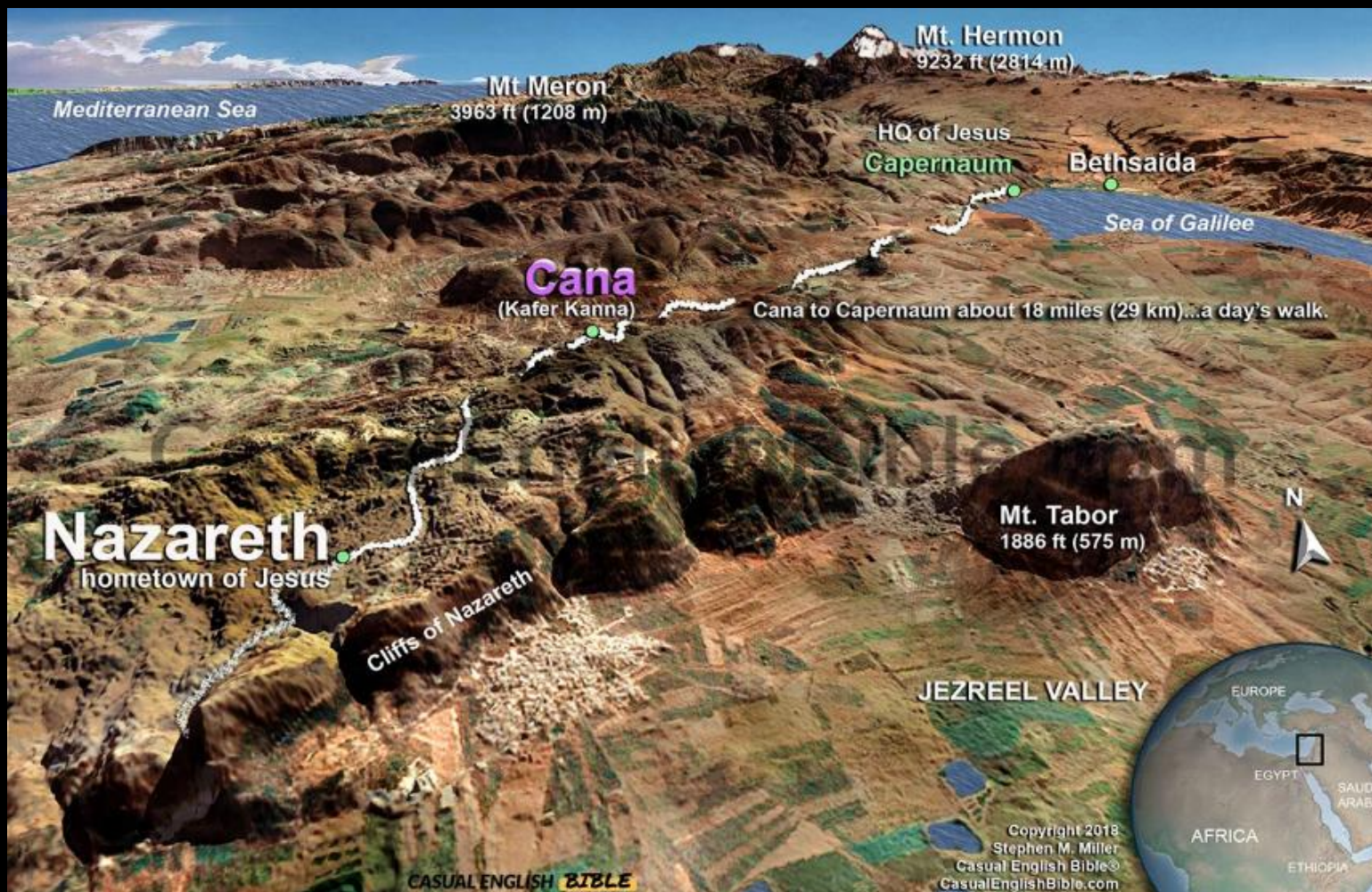
His place to live was prophesied – Nazareth (Mt. 2:23). God’s Work began again like the proverbial mustard seed (Mt. 13:31-32). Nazareth is a small town, estimated to have had 200 – 300 people. It was tucked in between hills, a backwater place.

Galilee of the Gentiles

Tribal Territories
(Isaiah 9:1)



He was fulfilling the prophecy of going from the land of Zebulun to the land of Naphtali found Is. 9:1-2, 6 and quoted in Mt. 4:12-19.



So, Jesus' ministry began with John the Baptist being arrested & Christ going to Capernaum. About 90% of his ministry would be in Galilee, around its lake. He started with own funds & with no support, even from His own family (Mk. 3:21).



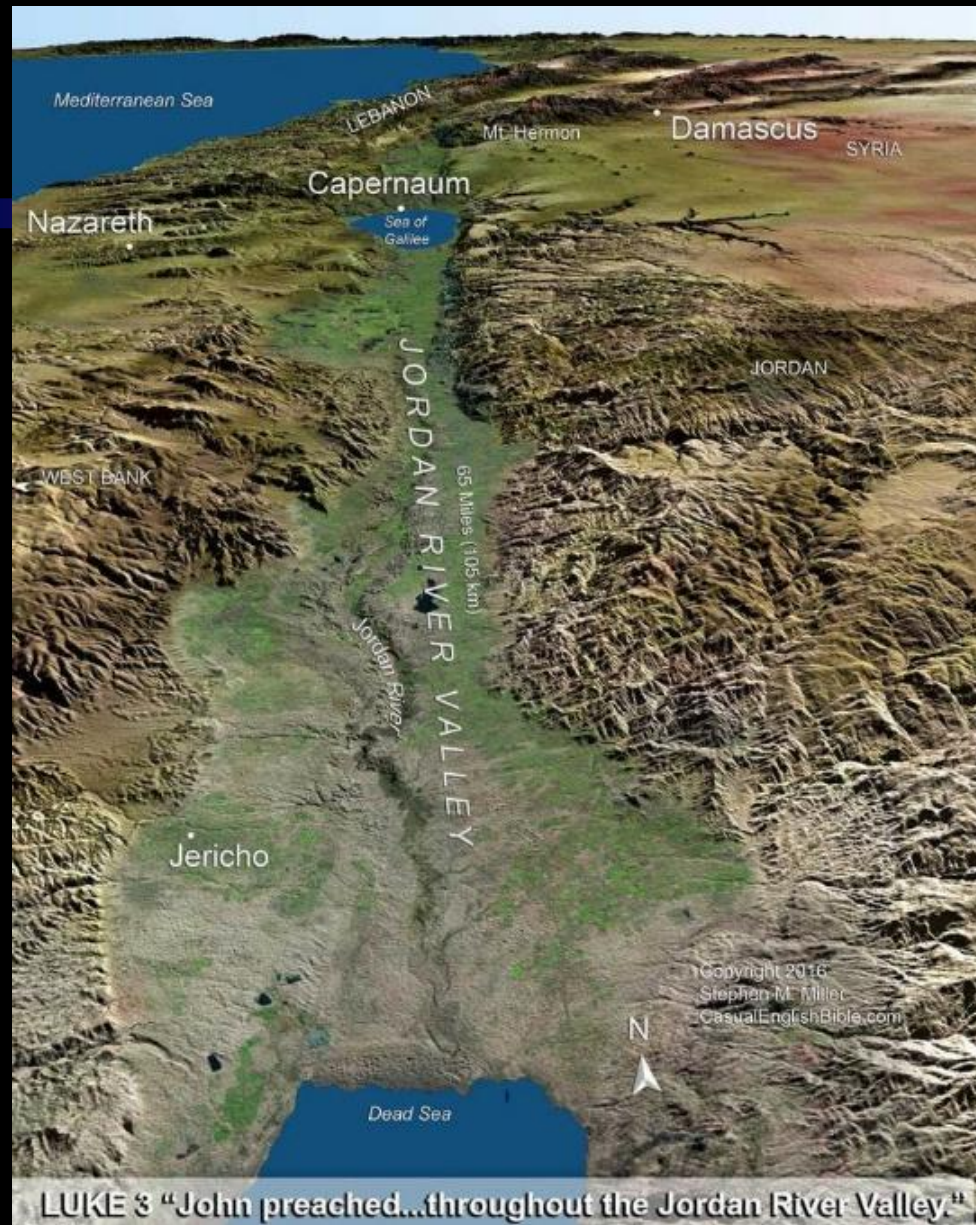
This was all carefully planned. Capernaum would be the ideal place as His headquarters & for training His disciples for the coming multifaceted world mission (Mt. 28:18-20; Mk. 16:15-16).



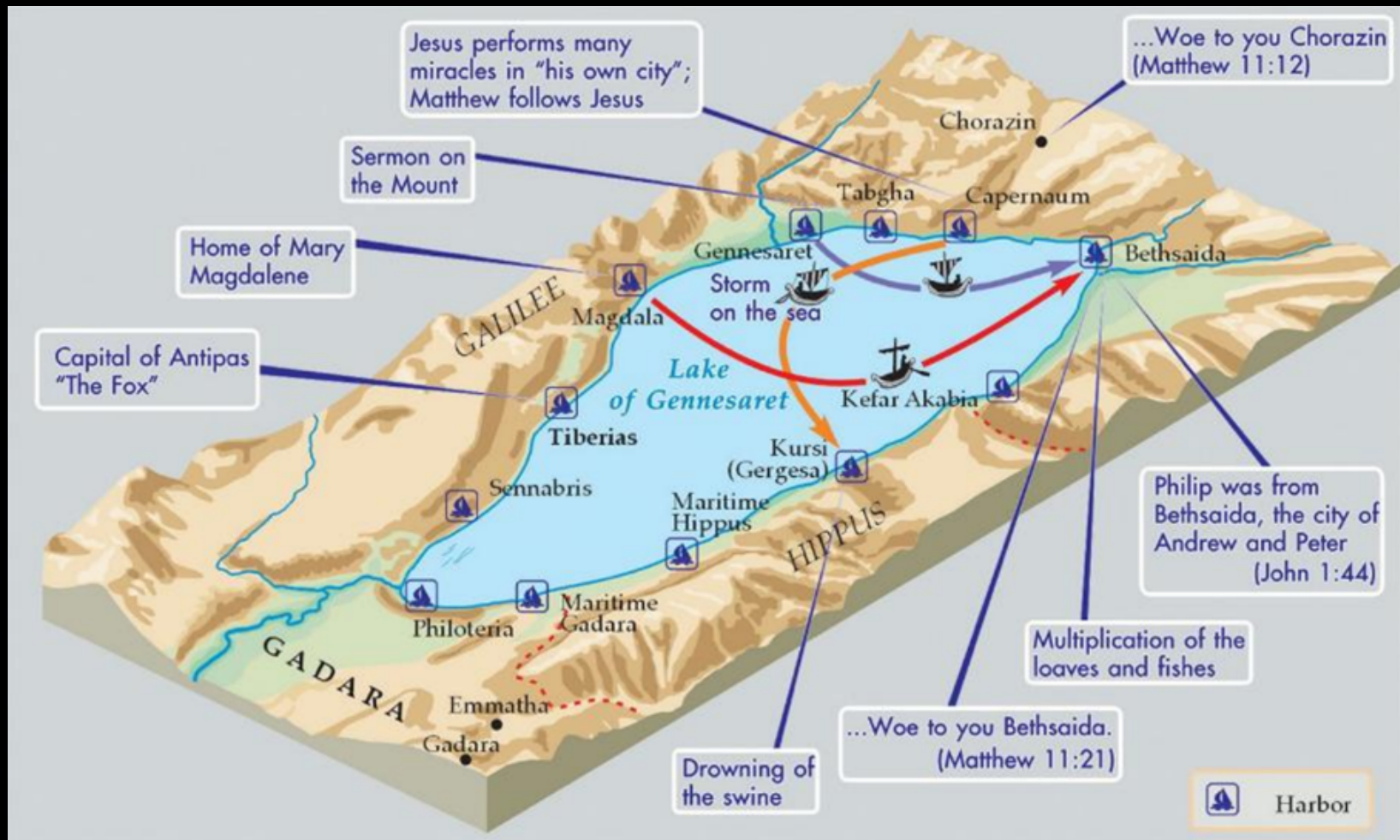
Galilee was ideally located, 100 miles from the Jewish authorities, and Capernaum being the second rabbinic center in Israel. There were four governing regions led by Herod Antipas & Herod Philip, Pontius Pilate and the Decapolis & all supervised by the Rome.



Capernaum was where two international highways intersected. Anything remarkable Jesus did could be divulged in a 20 mile radius.

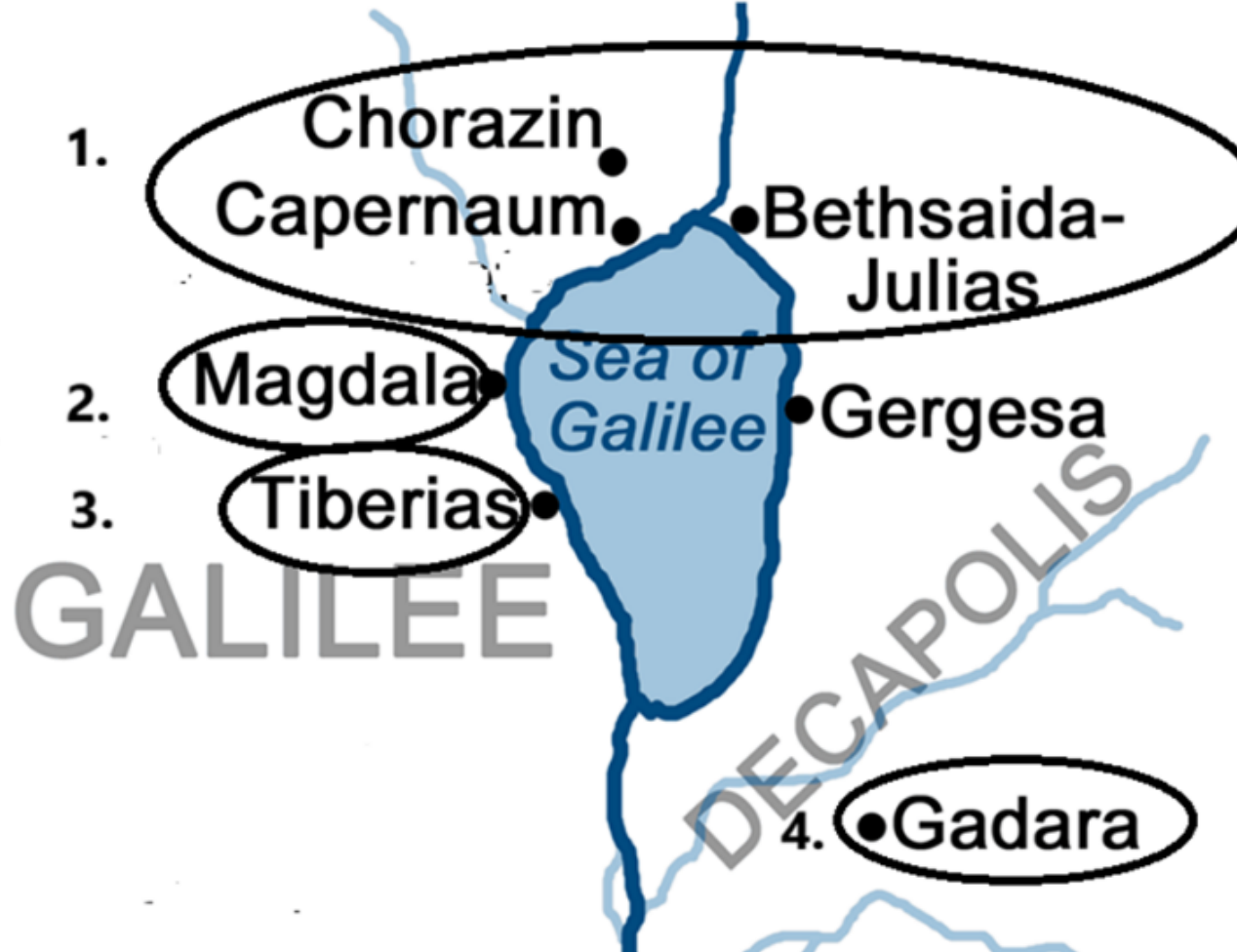


Another view going from Nazareth to Capernaum seen from the Jordan valley.



Christ's ministry involves dealing with four people groups & theologies. It was an ideal training ground for His disciples to accompany Him and watch how He dealt with the people and their different issues and perspectives.

Towns of Galilee



There were four basic people groups – representative of all the world. 1. The strongly religious triangle 2. The financial support group 3. The politically compromised group 4. The alluring Gentile world.

**1. STRONGLY RELIGIOUS
GROUPS - TRIANGLE**

CHORAZIN

CAPERNAUM

BETHSAIDA

**2. FINANCIAL SUPPORT
GROUP**

MAGDALA

SEA OF
GALILEE

TIBERIAS

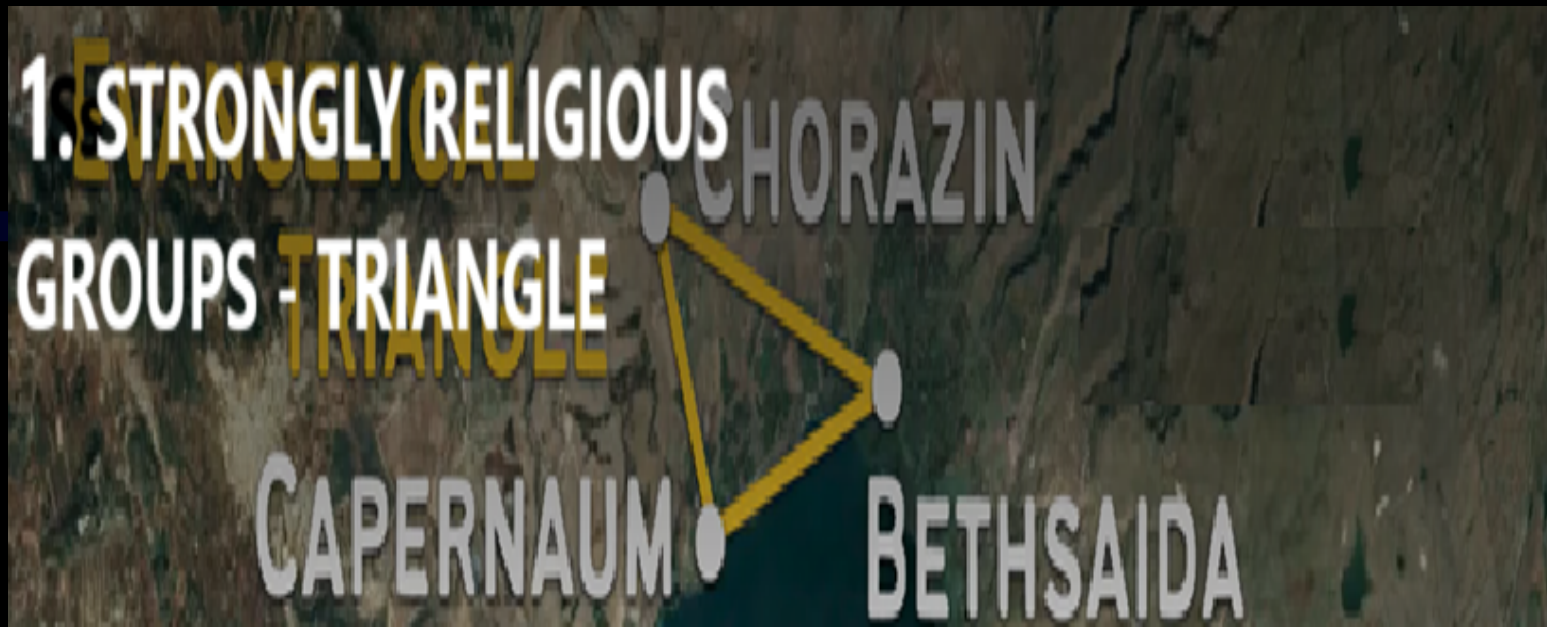
**3. HERODIANS - RELIGIOUSLY
COMPROMISED**

**4. GENTILES - THE
ALLURING GENTILE
WORLD**

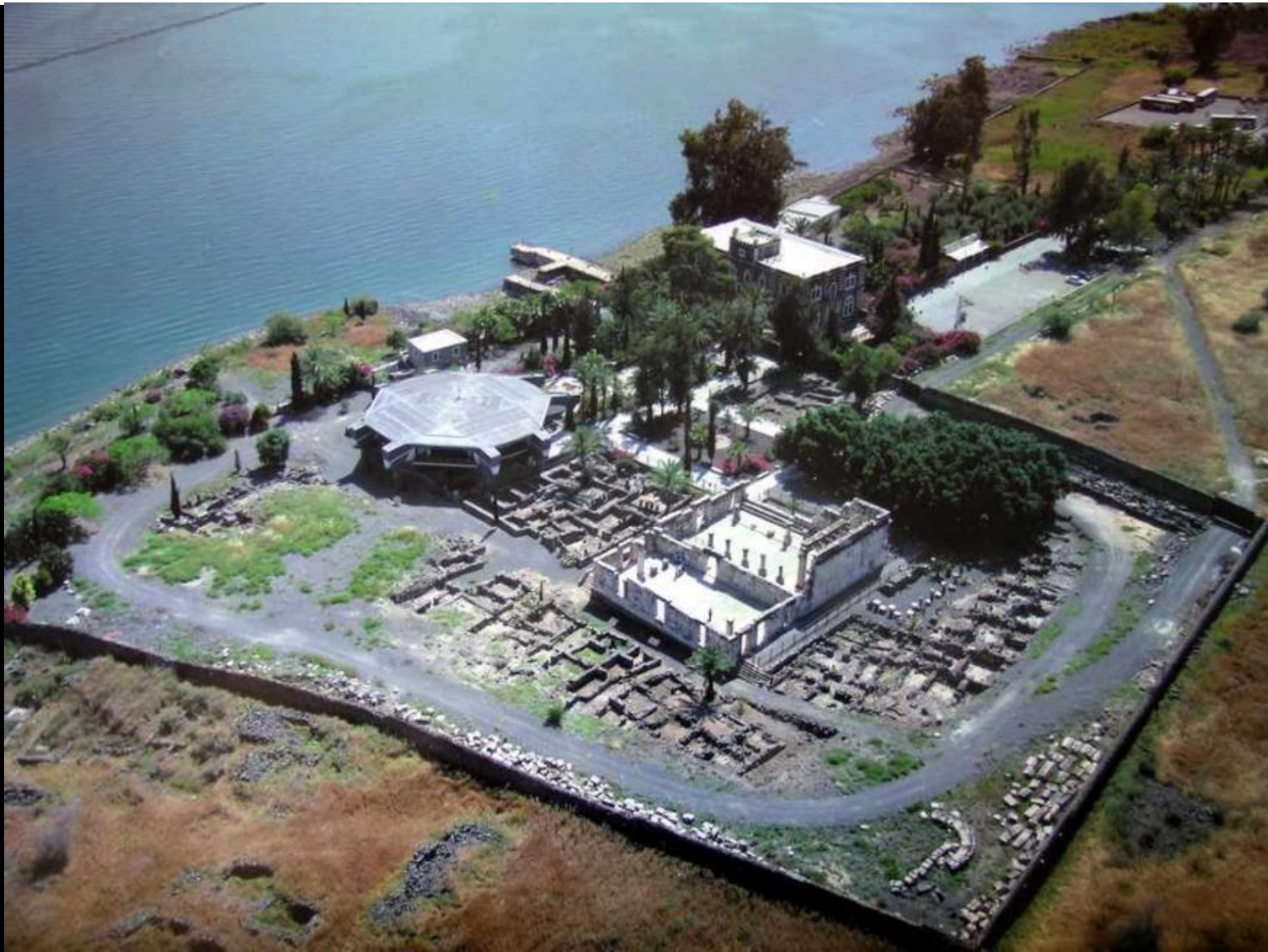
GADARA

13/21/25 Copyright

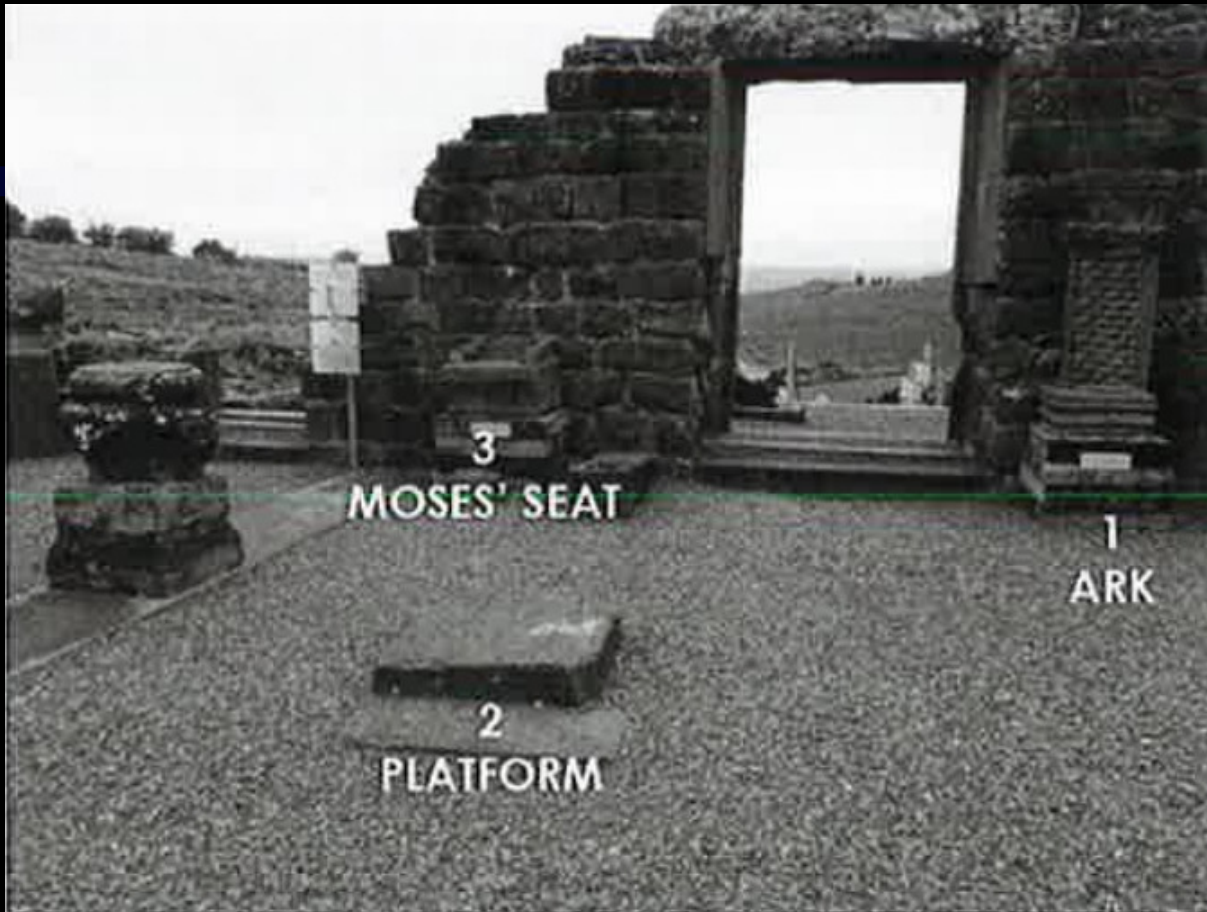
The four main groups of people and their different beliefs. We will focus on the first two.



1. Much of Christ's ministry & miracles took place in these 3 towns. Capernaum has 13 accounts, Bethsaida, two – the feeding of 5,000 and the healing of a blind man. Chorazin has only one. This is why Christ at the end condemns them for their lack of faith (Lk. 10:13-16) Rabbinicism mostly triumphed until up to 500 saw the resurrected Christ. Still there were only 120 at that Pentecost meeting in Acts 2.



Capernaum with its large synagogue and under it the foundations of an older one and the covered place for Peter's probable remains of his house.



Christ is recorded to have gone once to Chorazin and archaeologists have found a synagogue there with a stone “Moses’ seat.” It reminds us of what Jesus said in Mt. 23:1-5.

2. FINANCIAL SUPPORT

GROUP

MAGDALA • SEA OF GALILEE

An aerial photograph of the Sea of Galilee. A red dot is placed on the western shore of the lake, indicating the location of Magdala. The text 'MAGDALA • SEA OF GALILEE' is overlaid on the image. The word 'GROUP' is positioned above 'MAGDALA'. The sea is a dark blue-green color, and the surrounding land is a mix of brown and green, showing some agricultural fields and buildings.

Magdala was a city of around 30,000 people. It was an industrial hub of smoking & salting fish and manufacturing boats. Two synagogues have been found there. It was a religious and financial powerhouse. It was from there that Jesus received much of His financing during those 3 ½ years of His ministry.



Modern day Magdala with numerous archaeological sites. Jesus received much of His financial support from some of the ladies there, including Mary Magdalene and Herod's treasurer's wife (Lk. 8:1-3).

Lessons we can learn from the first two people groups:

1. The religious triangle of Capernaum, Bethsaida and Chorazin. They had a lot going for them, being at the headquarters of Jesus Christ, the preexistent Word – God in the flesh! Yet, their set ways, influenced by Rabbinicism, did not allow them to have an open mind. The parable of the wineskins also applied to them (Lk. 5:36-39). They were not like the Bereans (Acts 17:10-12).

2. The financial supporters at Magdala. Here, mostly women took up the challenge and found their role in Christ's ministry. (Pr. 31:20; Mt. 8:20; Lk. 12:20-21).

(Source material: *Lexam Geographic Commentary of the Gospels* (2017); archaeologist Brad Gray lectures).